



Full steam ahead: Dampfspektakel 2018

April 28 to May 1, around Trier

brochure for railway enthusiasts: general information – schedules – photo and video positions as at April 3, 2018

Dear railway enthusiast,

Four years after the most recent event with steam trains in Rheinland-Pfalz, yet another event in the "Dampfspektakel" series is approaching. The "Dampfspektakel" events are organized by the federal state of Rheinland-Pfalz and its two regional train operating associations. A Dampfspektakel features heritage trains to an intensive schedule for several consecutive days. The event has now a long tradition, initially under the heading "Tempo, Takt und Dampf", and always with a focus on a certain region of Rheinland-Pfalz:

2000 Kaiserslautern,
2002 Limburg an der Lahn,
2005 Neustadt an der Weinstraße,
2010 Trier und Gerolstein,
2014 Neustadt an der Weinstraße,
and now:
2018 Trier.

The 2018 Trier event is organized by the State of Rheinland-Pfalz and the Zweckverband Schienenpersonennahverkehr Rheinland-Pfalz Nord at Koblenz. The „Dampfspektakel“ promotes public transport and supports tourism. At the time of the first events of its kind more than 10 years ago, the timetables of service trains still allowed simply replacing the scheduled diesel traction with a steam locomotive without the risk of delays to the operation of the trains. This concept of proper "Plan-dampf" is not feasible any longer. The faster schedules and short stops of modern service trains cannot be kept with steam trains. Therefore, all trains in the Dampfspektakel 2018 run according to a special timetable.

The Dampfspektakel brings together heritage locomotives and at a number that is hardly achieved by other events in Germany. **The planned roster is as follows. Please note that changes may happen at short notice:**

text, pictures and maps:

Andreas Illert, front picture: Richard Görgen, layout: Dupont & Steyer Werbeagentur, in cooperation with the Ministry of Economic Affairs, Transport, Agriculture and Viniculture of the German State of Rhineland-Palatinate

Nine steam locomotives:

Number	Type	Builder	provided by
01 1075	4-6-2	Berliner Maschinenbau AG 1939	Stoom Stichting Nederland, Rotterdam
01 202	4-6-2	Henschel 1937	Verein Pacific 01 202, Lyss, Schweiz
03 1010	4-6-2	Borsig 1940	DB Museum, Halle (Saale)
52 1360	2-10-0	Borsig 1943	IGE Werrabahn Eisenach e.V.
52 8154	2-10-0	Maschinenbau und Bahnbedarf Aktiengesellschaft (Berlin) 1943	Eisenbahnmuseum Bayerischer Bahnhof e.V., Leipzig
52 8195	2-10-0	Maschinenbau und Bahnbedarf Aktiengesellschaft (Berlin) 1943	Fränkische Museums-Eisenbahn e. V., Nürnberg
78 468	4-6-4t	Henschel 1923	Eisenbahn-Tradition, Lengerich
CFL 5519	2-10-0	Wiener Lokomotivfabrik Floridsdorf 1949	Vereinigung 5519 a.s.b.l., Bettembourg
11sm	0-4-4-0t	Humboldt 1906	Interessengemeinschaft Brohltal-Schmalspuren-eisenbahn e.V

Two historic diesel locomotives:

V 200 033	B'B'	Krauss-Maffei 1956	Museumseisenbahn Hamm
211 041-9	B'B'	Jung 1962	NeSa Rottweil

Two more historic diesel locomotives stand-by:

212 372-7	B'B'	Deutz 1965	DB Museum Koblenz
216 224-6	B'B'	Krupp 1968	IGE Hersbruck

One historic electric locomotive:

103 113-7	Co'Co'	Krauss-Maffei/Siemens 1970	DB Museum, Koblenz
-----------	--------	----------------------------	--------------------

Two more historic electric locomotives stand-by:

E10 1239	Bo'Bo'	Krauss-Maffei/Siemens 1962	DB Museum, Koblenz
111 001-4	Bo'Bo'	Krauss-Maffei 1974	DB Museum Koblenz

Many heritage coaches running in consists as follows:

Bezeichnung	Zusammensetzung
Silberlinge 1 (DB) (,silver fish' DB)	Bn + Bn + Bn + Bn + Bpw (mail car)
Silberlinge 2 (CFL)	ABn + Bn + Bn + Bn
gemischter Eilzug	Bn + AByl + Bn + Bn
Silberlinge 3 (CFL)	ABDn + Bn + Bn + Bn
Umbaudreiachser	B3yg + B3yg + B3yg + AB3yg + AB3yg + BD3yg
Umbauvierachser	BD4yg + B4yg + AB4yg + B4yg + B4yg
TEE	4 coaches of DB-museum
CFL-Zug	Am + Am + Am (coaches of IGE Hersbruck)

Hinweise für Mitfahrer

The costs for the event amount to a more than half a million Euros. With significant funding from public money the fares can be kept low. However, unlike the previous events the ordinary tickets of local transport are not valid in the steam trains. All Dampfspektakel trains require a special ticket. Such tickets are available as follows (all prices are in Euros):

Einzelticket (single journey)

One way journey with a Dampfspektakel special

1 zone	7,50 Euro
2 zones	15,00 Euro
entire network	22,00 Euro

Tagesticket (day pass)

Travel on as many Dampfspektakel specials as you like during the day

1 zone	27,00 Euro
2 zones	54,00 Euro
entire network	72,00 Euro

Eventticket (event pass)

All Dampfspektakel specials, valid on all days,
entire network 190,00 Euro

- For the location of zones see the overview map.
- On the day/s of your journey/s the Dampfspektakel tickets are valid on all local stopping trains and buses within the boundaries of the Verkehrsverbund Region Trier (regional transport Trier), fare zones Trier and Kyll.
- Children at age 14 or younger travel free in the Dampfspektakel specials.
- It is not possible to reserve a seat.
- It is not possible to take Cycles, pushchairs and buggies on the Dampfspektakel specials.
- Single tickets are not valid for the „Rund um Trier“ special on Monday. You need at least a day pass for one zone to travel on that train.

Day passes and event passes are available online at www.dbre-gio-shop.de

Day passes, event passes and single tickets are also available from ticket machines of DB Regio and at the ticket counters at Trier main station, Cochem and Merzig.

Please note that tickets are NOT sold in the trains!

Zoneneinteilung: grafische Übersichtskarte



This brochure has been compiled by the Revierdampf-Team. It is dedicated to photographers and video-filmers. The brochure provides schedules with details of operations, graphic timetables, suggestions for good photo and video positions, and some highlights of the region as to vine and dining. Please keep in mind that changes with the timetables and locomotives may happen at short notice. Up-to-date information is published in time at the official website by the organizers: www.dampfspektakel.info

During the event the steam locomotives are allocated and serviced at the Trier workshop of DB Regio AG. A visit to the workshop is not possible. Locomotives can be turned at Trier and Saarbrücken. The turntable at Gerolstein does not allow for express locomotives. At the other terminal stations the loco runs round the train, so it operates tender first in one direction.

In case of a high forest fire risk, steam locomotives may be replaced with diesel or electric locomotives, trains might even be cancelled.

We ask all participants of the event to behave with respect

and comply with the rules, for the benefit of organizers as well as fellow enthusiasts. DO NOT TRESPASS. Stay clear of the tracks. Security staff and federal police watch the event. When train staff report danger by people on or near the tracks all train operations come to a stop. Offenders thus do not only spoil their own enjoyment but also interrupt the Dampfspektakel event and all service trains.

Chasing trains by car on the local roads makes no sense. The steam locomotive is faster! At the photo positions, please arrange with fellow photographers, do not park your car in the view and do not arrive at the last minute.

We wish you a pleasant stay and hope together with you for decent weather!

Your
Revierdampf-Team

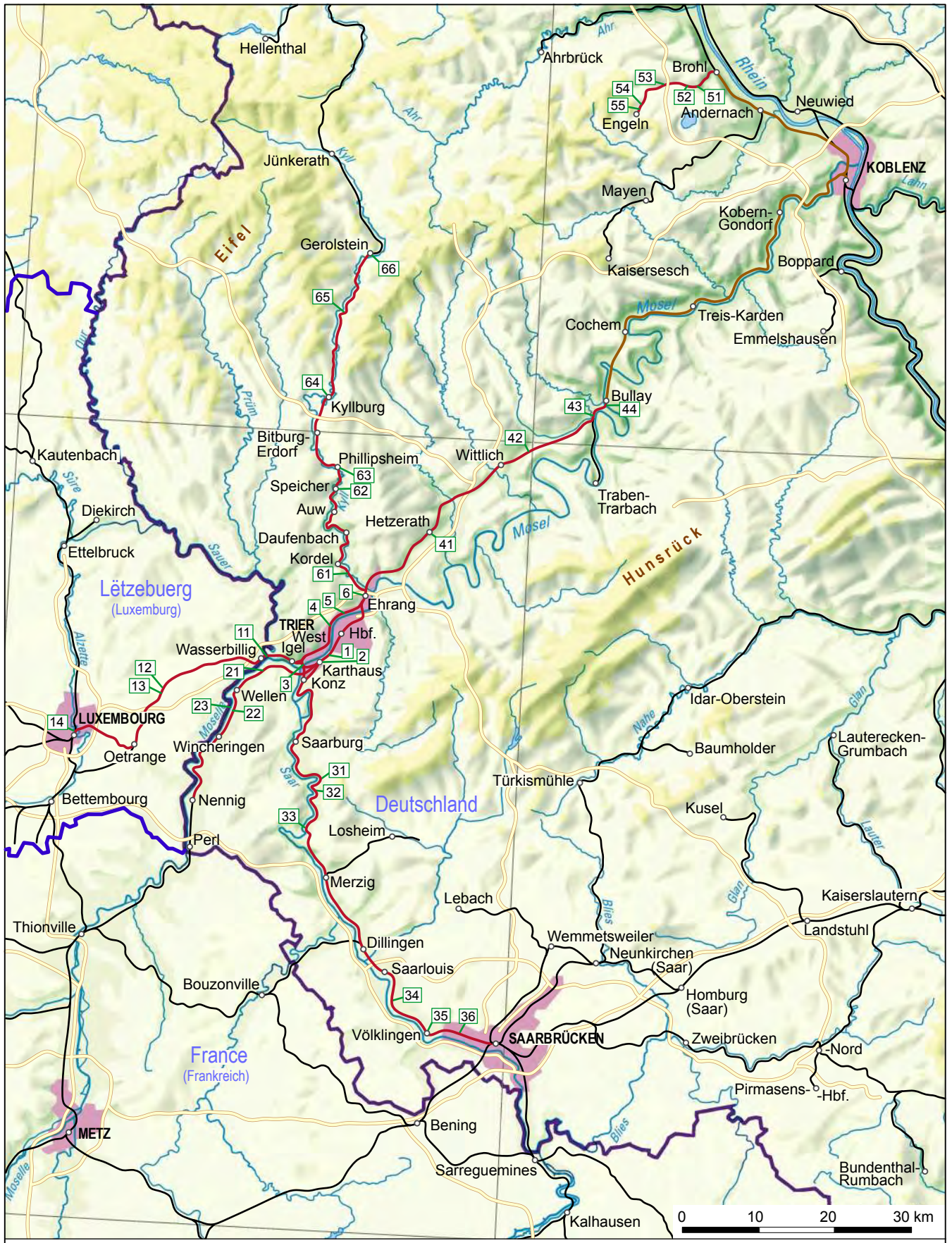
Suggestions for photo and video positions

This list suggests positions for photos and video along the Dampfspektakel lines. The positions have been checked in August 2017 or January 2018. The situation may have changed since that date due to vegetation or construction works. The list is not exhaustive. If you check maps, areal images or simply walk along near the line you will find more good positions, and eventually have that position for your own.

Trier – Konz

All lines in or near Trier city are two track and electrified. The “Trierer Weststrecke” (Trier west line) from Trier-Ehrang via Trier West to Igel/Konz is freight only with no passenger trains since 1983. Local Passenger service may resume from 2022 on.

- 1 Line close to the Mosel river, for trains travelling towards Trier, from the cycle and pedestrian path at the southern bank. Car park near the Hotel Estricher Hof at the main road B51, access via pedestrian underpass.
- 2 Platforms at Karthaus station not modernized. Reconstruction may start soon. Buildings and underpass in bad shape.
3. Mosel bridge between Konz and Igel, from pedestrian and cycle ways/paths along the banks at both sides of the river. Pedestrians can cross the river on a footwalk next to the track. Carpark at the southern bank.
- 4 View of Mosel river and railway line from the road bridge Kaiser-Wilhelm-Brücke, for trains from Ehrang.
- 5 Panorama view from the hiking route „Felsenpfad“. Access from the Weißhaus restaurant (with public viewpoint) or from the Talstraße at Biewer.
- 6 Ehrang station, not modernized. In 2022 the station may be abandoned and replaced with new suburban halt further south at the Hafenstraße.



Overview map Dampfspektakel Trier 2018

- trains with steam loco
- historic diesel or electric loco
- other railway line
- 65 photo position
- station where steam trains stop for passengers
- other important station
- Autobahn
- int. border
- ~ river

Andreas Illert / Revierdampfteam 2018. topographischer Kartenhintergrund © GeoBasis-DE / BKG 2017 (DTK 1000)



Aufnahmepunkt 2



Aufnahmepunkt 13



Aufnahmepunkt 3



Aufnahmepunkt 14



Aufnahmepunkt 6



Aufnahmepunkt 22a



Aufnahmepunkt 11



Aufnahmepunkt 22b



Aufnahmepunkt 12



Aufnahmepunkt 23



Aufnahmepunkt 31

Trier – Luxembourg (Mosel-Syretal-Strecke)

The line is electrified und runs for some sections through open countryside. It is two tracks except for the two sections from Luxembourg viaduct to Oetrange. The line features gradients from Wasserbillig to Manternach and from Luxembourg viaduct to Oetrange.



Aufnahmepunkt 32

11 Wasserbillig: view from the (German) river bank at Oberbillig across the Mosel to the railway bridge over Sauer river.

12 View of Roodt-sur-Syre village for trains in the direction of Trier from the road between Olingen and Roodt-sur-Syre.

13 Roodt-sur-Syre station, for passing trains in the direction of Luxembourg.

14 Luxembourg: view of the Pulvermuhle railway viaduct and the city fortification from the footwalk Chemin der la Corniche.



Aufnahmepunkt 35

Trier – Nennig (Obermoselstrecke)

The line is electrified throughout and two track except for the tunnel at Nittel and a short section from Karthaus to the bridge over Saar river. It is level, and hidden by bushes at many places.

21 at the edge of Oberbillig village for trains towards Wellen with the local church in the background.

22 Nittel: From the platform of Nittel railway halt for trains towards Nennig, and panorama view from the vineyards for trains towards Trier.

23 Nittel: view of the line across Mosel river from the opposite bank (Luxembourg territory).



Aufnahmepunkt 36



Aufnahmepunkt 41

Trier – Saarbrücken (Saarstrecke)

The line is electrified, two tracks and flat. It runs through the mountains along the the Saar river between Konz and Mettlach. The main road and the railway line are situated on the east bank. Good photo positions can be found roadside as well as from the opposite bank.

31 panorama view of the „kleine Saarschleife“ (small Saar bend) near Serrig. Drive through Serrig on the road to Greimerath / B 268. About 3 kilometers from the edge of the village a car park is situated at the left side of the road in the forest. If you turn towards the river, a short walk to the left leads to a viewpoint named „Schöne Aussicht“. A short walk on the path uphill to the right leads to the kite ramp.

32 from the road bridge at Taben halt, view of river, railway and rocks for trains in the direction of Saarbrücken, or with the impressive quarry of Düro works for trains in the direction of Trier.

33 Mettlach: view across the river from the Lutwinuskapelle (Lutwinus chapel) at the left bank north of Mettlach town.

34 Enzdorf power station from the bridge of the bypass road near Enzdorf, for trains in the direction of Saarbrücken.

35 Völklingen station, for trains in the direction of Saarbrücken, with the “Völklinger Hütte” in the background, a former steelworks and now a world heritage site. Cars can be parked in the parking garage „Bahnhof“ or „Globus“. The steelworks south of the station is still active and receives molten iron from Dillingen by rail in torpedo cars.

36 at Luisenthal halt with the winding towers of the abandoned coal mine, from the footpath between tracks and ALDI parking lot for trains in the direction of Saarbrücken, or from the station platform for trains in the direction of Trier.





Aufnahmepunkt 53



Aufnahmepunkt 55



Aufnahmepunkt 61



Aufnahmepunkt 62

Aufnahmepunkt 63



Trier – Koblenz (Moselstrecke)

The scenic two-track line is electrified and features moderate gradients where it leaves the Mosel valley at Bullay and Schweich.

- 41 Hetzerath station, not modernized, for trains to Trier
- 42 Ürzig station, not modernized
- 43 Unusual valley side viaduct Pünderich, for trains in both directions from the opposite bank of river Mosel (access from Pünderich), or by foot from Alf (Gasthof Waldfriede, see position 44) or from Reil
- 44 Mosel bridge at Bullay, for trains from Trier, from the northern bank, for trains to Trier from a gap in the forest on the southern bank with a view at track level, for trains in both directions from an elevated position in the vineyards west of the bridge at the Gasthof Waldfriede (access via local street "Auf Tannerd" from Alf, exit from the B53 at "Mosel Hotel Alf")

More excellent positions between Bullay and Koblenz for the TEE trains with electric loco. Try at Neef, Treis-Karden and Hatzenport

Brohl – Engeln (Brohltalbahn)

The Brohltalbahn is a single track, not electrified 1000 mm narrow gauge line owned by the Brohltal municipality. The line is steep and very scenic. On the upper section between Oberzissen and Engeln only locomotives with appropriate braking system are allowed, due to the extreme gradient of 1:20.

- 51 brick viaduct at Jägerheim restaurant, several positions, for downhill trains too. Just west of the viaduct the trains pass the only tunnel on the line.
- 52 Burgbrohl station, with nice station building
- 53 at the east edge of Niederzissen village, for trains in the direction of Engeln, with the impressive bridge of A61 motorway.
- 54 station and loading facilities at Brenk. The Phonolit quarry still ships its products by rail.
- 55 several positions between Brenk and Engeln



Trier – Gerolstein (Eifelstrecke)

The Eifelstrecke is a scenic non-electrified main line through the Eifel mountains. It is two tracks between Ehrang and Kordel and between Densborn and Birresborn. On all other sections between Trier and Kordelstein the second track has been lifted after the second world war and not reintroduced since. The Kylltal bicycle route uses the space of the former second track for parts. Noteworthy on the southern section of the Eifelstrecke are several station buildings and tunnel portals with adornments in the style of medieval castles.



61 open space near Ramstein castle. Access on a minor road from Kordel station.

62 Speicher station is scenic

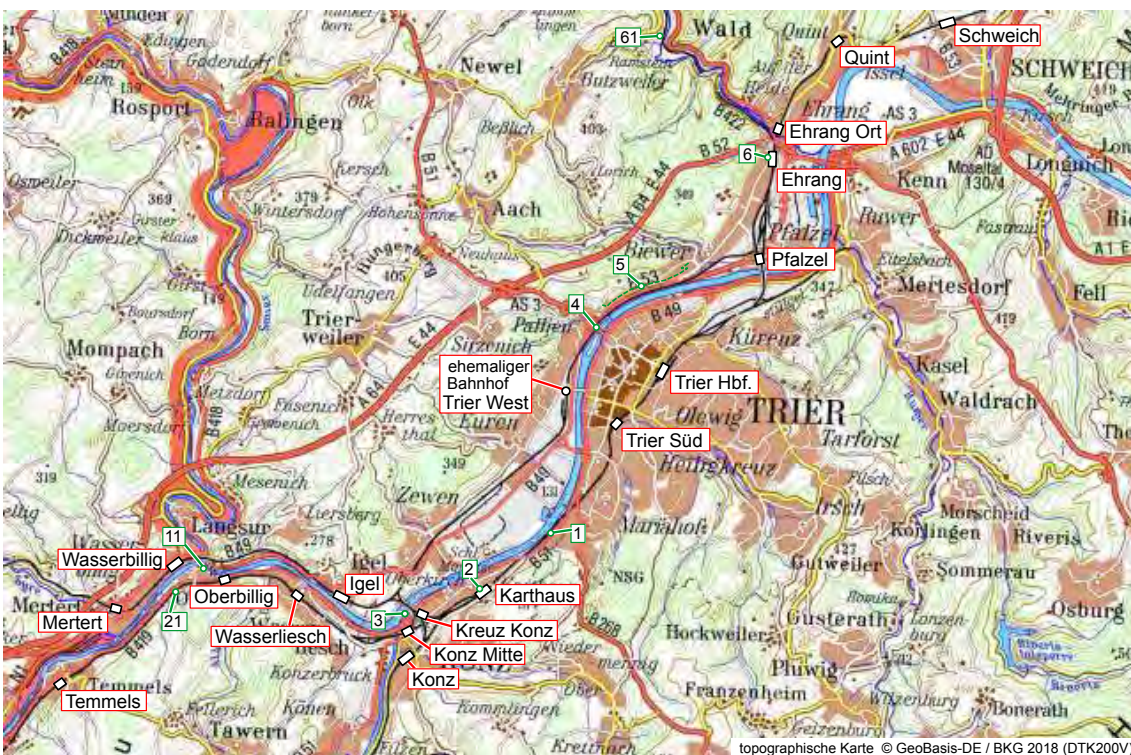
63 View from the road bridge at Phillipsheim station, for trains in the direction of Gerolstein. Old station building, modern lights.



64 Kyllburg tunnel, for trains in the direction of Gerolstein. Kyllburg station is spoiled by a modern pedestrian overpass.

65 Mürtenbach halt, for trains departing towards Gerolstein, with the ruins of Betradaburg castle in the background.

66 Gerolstein station, not modernized apart from colour light signals.



timetables for Saturday April 28, Sunday April 29 and Tuesday May 1 (public holiday)

departures and arrivals Trier Hbf.

last corrections April 02. All trains steam unless stated otherwise. Dampfspektakel tickets are not valid in the private specials.

27.4.2018

train number	Trier Hbf. arr. (an), dep. (ab)	to (nach) / from (von)	track	remarks
20113	an 11.45 private special with 01 202	von Neustadt (Weinstraße)	403/413	

train number	Trier Hbf. arr. (an), dep. (ab)	to (nach) / from (von)	track	remarks
61932	ab 6.40	nach Gerolstein	403	
61959	ab 6.44	nach Wittlich	412	
61960	ab 7.59	nach Nennig	411	
61951	ab 7.59	nach Saarbrücken	412	
61934	ab 8.45	nach Gerolstein	413	
13401	an 9.08	von Luxemburg	413	
91341/91342	an 9.41, ab 9.55	von Koblenz, nach Koblenz	412	electric loco
61961	an 10.04, ab 10.15	von Nennig, nach Bullay	403	
61953	ab 10.08	nach Saarbrücken	401	
61962	an 10.14, ab 10.25	von Wittlich, nach Nennig	411	
61933/61936	an 10.49, ab 11.18	von Gerolstein, nach Gerolstein	403	
13400	ab 10.53	nach Luxemburg	413	
150	an 11.46, ab 11.56	von Mönchengladbach. Steam loco continues to Gerolstein with support van	402/412	only April 28. Private special, diesel at the rear.
61963	an 13.05	von Nennig	413	
61950	an 13.37	von Saarbrücken	412	
61935/61938	an 13.49, ab 14.18	von Gerolstein; nach Gerolstein	403	
61965	ab 14.14	nach Wittlich	401	
61964	an 14.43, ab 14.54	von Bullay, nach Nennig	401	
61952	an 15.05, ab 15.09	von Saarbrücken, nach Wittlich	403	
13403	an 15.36	von Luxemburg	413	
61937/61940	an 15.45, ab 16.14	von Gerolstein, nach Bitburg	403	
61955	ab 15.50	nach Merzig	401	Diesel
61967	an 17.07, ab 17.15	von Nennig, nach Wittlich	413	
61966	an 17.12, ab 17.23	von Wittlich, nach Wellen	411	
225	ab 17.55	nach Mönchengladbach	402/412	only April 28, private special with diesel loco
61968	an 18.03	von Wittlich	401	
13402	ab 18.17	nach Luxemburg	413	
61954	an 18.45	von Merzig	403	Diesel
61939	an 18.43	von Bitburg	402	
61969	an 18.51	von Wellen	413	
61941	an 19.50	von Gerolstein	413	
61970	an 20.03	von Wittlich	401	
20116	ab 20.55	nach Neustadt	413/403	only May 1st, private special with 01 202

Dampfspektakel Samstag 28.04.2018

Halt zum Ein- und Aussteigen,
Ankunfts- und Abfahrtszeit /
times of arrival and departure

Zug verkehrt über Trier West /
train runs via Trier West

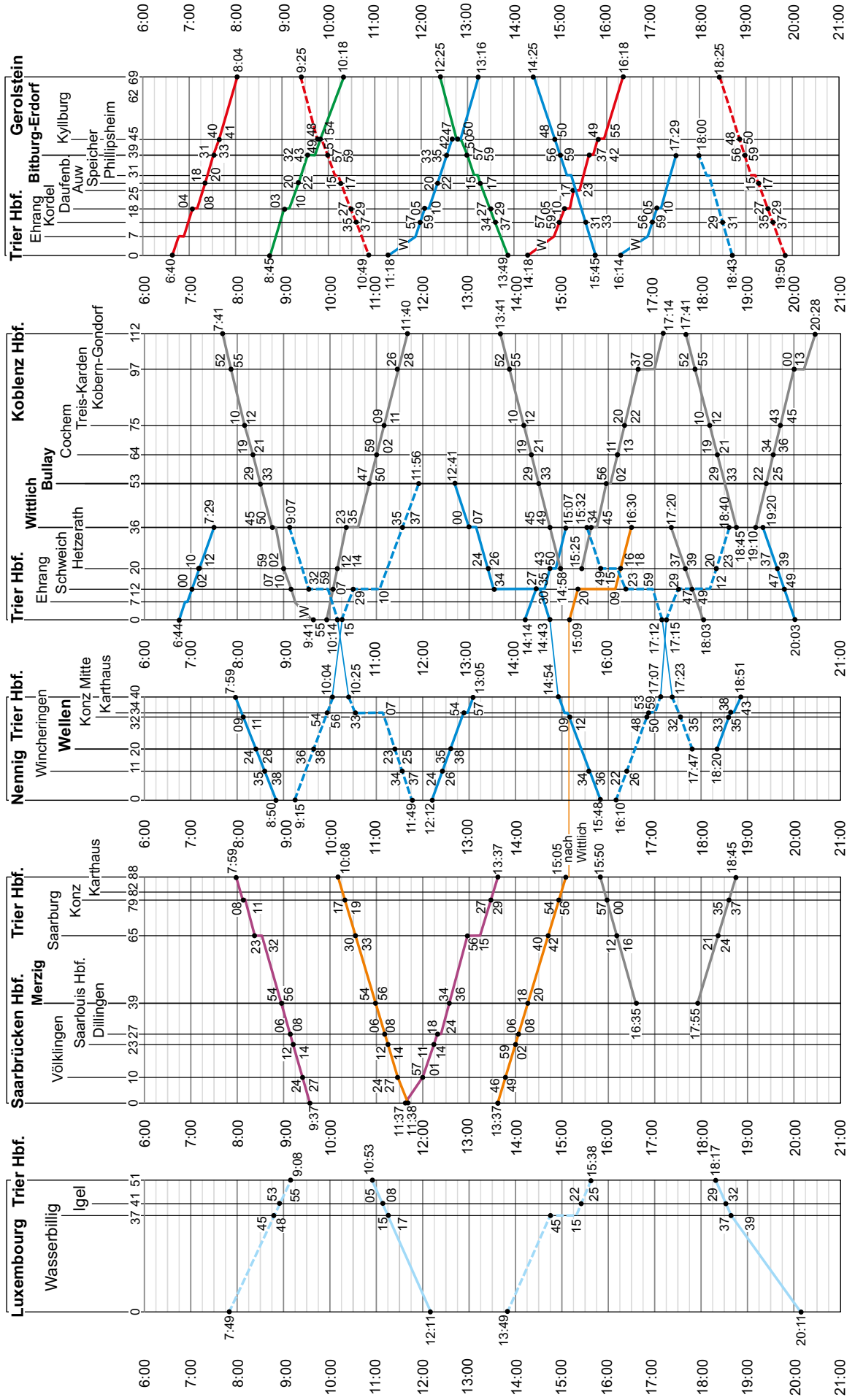
Zuglok / train engine

- 01 202
- 01 1075
- 03 1010
- CFL 5519
- 52 1360 / 8154 / 8195
- 78 468
- Diesellok / Elok

Rauchkammer voraus
chimney first

Tender voraus
tender first

Stand: 30. 03. 2018
Graphik: Illert / Revierdampf-Team
alle Angaben ohne Gewähr



Dampfspektakel

Sonntag 29.04.2018

Dienstag 01.05.2018

Halt zum Ein- und Aussteigen,
Ankunfts- und Abfahrtszeit /
train stops for passengers,
times of arrival and departure

Zug verkehrt über Trier West /
train runs via Trier West

Zuglok / train engine

- 01 202
- 01 1075
- 03 1010

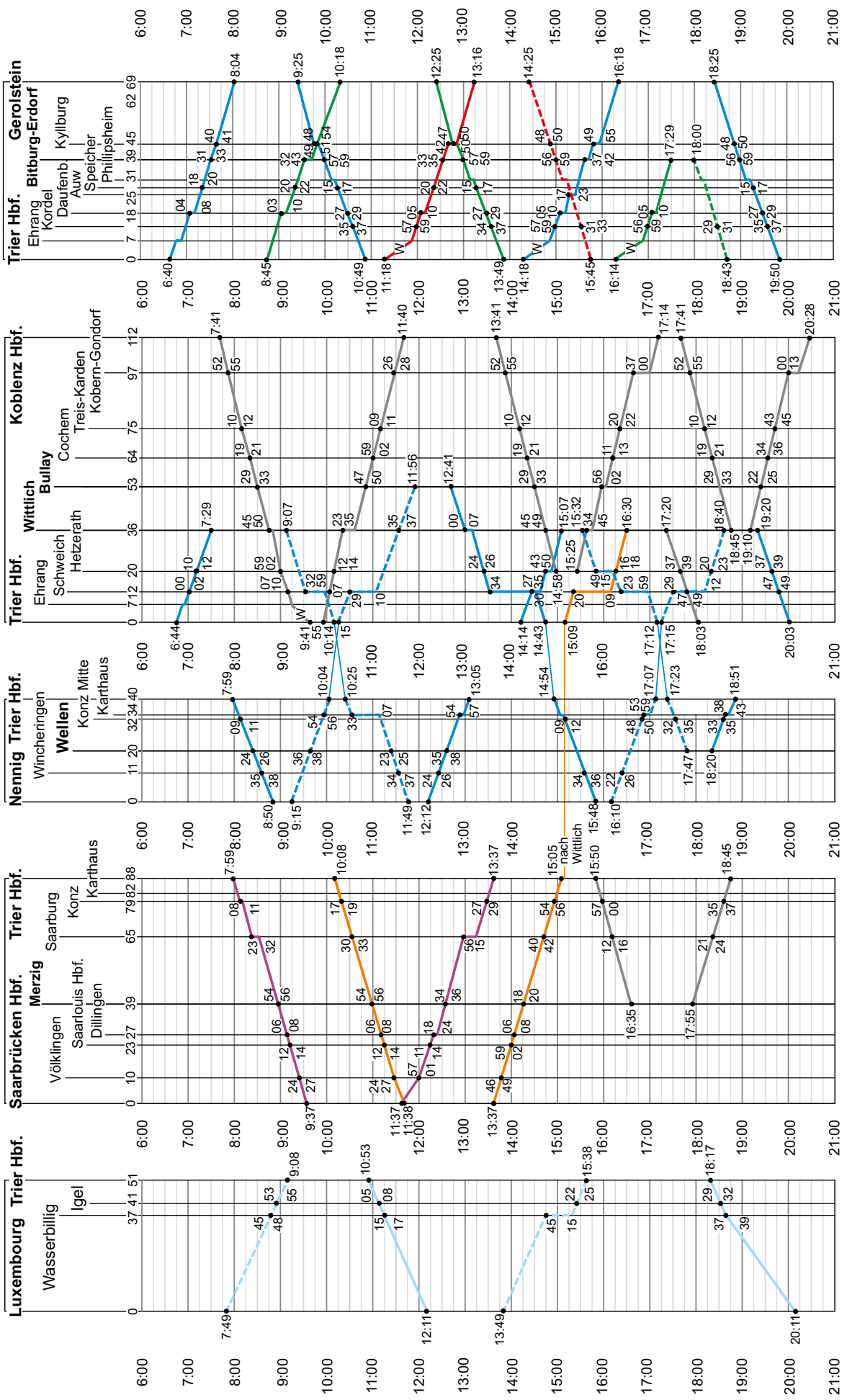
CFL 5519

- 52 1360 / 8154 / 8195
- 78 468

Rauchkammer voraus
chimney first

Tender voraus
tender first

Stand: 30.03.2018
Graphik: Illert / Reverdampf-Team
alle Angaben ohne Gewähr



Nennig – Trier – Koblenz, *Saturday, Sunday and Tuesday*

train number		DPE 61959	TEE 91342	DPE 61961	DPE 61963	DPE 61965	TEE 91344	DPE 61952	DPE 61967	TEE 91346	DPE 61969
loco at 28.04.		52 1360	103 113	52 8154 tender first	52 1360	52 1360	103 113	01 1075	52 8154 tender first	103 113	52 1360
loco at 29.04.		52 1360	103 113	52 81954 tender first	52 1360	52 1360	103 113	01 1075	52 8154 tender first	103 113	52 1360
loco at 01.05.		52 1360	103 113	52 8154 tender first	52 1360	52 1360	103 113	01 1075	52 8154 tender first	103 113	52 1360
coaches at 28.04.		gemischter Eilzug	TEE DB-Museum	Silberlinge 3	gemischter Eilzug	gemischter Eilzug	TEE DB-Museum	Silberlinge 1	Silberlinge 3	TEE DB-Museum	gemischter Eilzug
coaches at 29.04.		gemischter Eilzug	TEE DB-Museum	Silberlinge 3	gemischter Eilzug	gemischter Eilzug	TEE DB-Museum	Silberlinge 1	Silberlinge 3	TEE DB-Museum	gemischter Eilzug
coaches at 01.05.		gemischter Eilzug	TEE DB-Museum	Silberlinge 3	gemischter Eilzug	gemischter Eilzug	TEE DB-Museum	Silberlinge 1	Silberlinge 3	TEE DB-Museum	gemischter Eilzug
Nennig	ab			09:15	12:12				16:10		
Wincheringen	an				12:24				16:22		
	ab				12:26				16:26		
Wellen	an			09:36	12:35						
	ab			09:38	12:38						18:20
Konz-Mitte	an								16:48		18:33
	ab								16:50		18:35
Karthaus	an			09:54	12:54				16:53		18:38
	ab			09:56	12:57				16:59		18:43
Trier Hbf	an		09:41 von Koblenz	10:04	13:05			15:05 von Saarbrücken	17:07		18:51
	ab	06:44	09:55	10:15		14:14		15:09	17:15		
Ehrang	an	06:51 passengers cannot alight or board									
	ab	06:53 (*)									
Schweich DB	an	07:00	10:05	10:29 track 1 for water		14:27		15:20 track 1 for water	17:29 track 1 for water		
	ab	07:02	10:07	11:10		14:35		16:09	18:12		
Hetzerath	an	07:10	10:12			14:43		16:16	18:20		
	ab	07:12	10:14			14:50	15:25	16:18	18:23		
Wittlich Hbf	an	07:29	10:23	11:35		15:07	15:34	16:30	18:40		
	ab		10:35	11:37			15:45			19:10	
Bullay DB	an		10:47	11:56			15:56			19:22	
	ab		10:50				16:02			19:25	
Cochem (Mosel)	an		10:59				16:11			19:34	
	ab		11:02				16:13			19:36	
Treis-Karden	an		11:09				16:20			19:43	
	ab		11:11				16:22			19:45	
Kobern- Gondorf	an		11:26				16:37			20:00	
	ab		11:28				17:00			20:13	
Koblenz Hbf	an		11:40				17:14			20:28	

(*) simultaneous departure at 6:53 from Ehrang: 61959 to Trier and 61932 to Gerolstein

Koblenz – Trier – Nennig, *Saturday, Sunday and Tuesday*

train number		DPE 61960	TEE 91341	DPE 61962	DPE 61964	TEE 91343	DPE 61966	DPE 61968	TEE 91345	DPE 61970
loco at 28.04.		52 8154	103 113	52 1360 tender first	52 8154	103 113	52 1360 tender first	216 224, am Schluss 01 1075	103 113	52 8154
loco at 29.04.		52 8154	103 113	52 1360 tender first	52 8154	103 113	52 1360 tender first	216 224, am Schluss 01 1075	103 113	52 8154
loco at 01.05.		52 8154	103 113	52 1360 tender first	52 8154	103 113	52 1360 tender first	216 224, am Schluss 01 1075	103 113	52 8154
coaches at 28.04.		Silberlinge 3	TEE DB-Museum	gemischter Eilzug	Silberlinge 3	TEE DB-Museum	gemischter Eilzug	Silberlinge 1	TEE DB-Museum	Silberlinge 3
coaches at 29.04.		Silberlinge 3	TEE DB-Museum	gemischter Eilzug	Silberlinge 3	TEE DB-Museum	gemischter Eilzug	Silberlinge 1	TEE DB-Museum	Silberlinge 3
coaches at 01.05.		Silberlinge 3	TEE DB-Museum	gemischter Eilzug	Silberlinge 3	TEE DB-Museum	gemischter Eilzug	Silberlinge 1	TEE DB-Museum	Silberlinge 3
Koblenz Hbf	ab		07:41			13:41			17:41	
Kobern- Gondorf	an		07:52			13:52			17:52	
	ab		07:55			13:55			17:55	
Treis-Karden	an		08:10			14:10			18:10	
	ab		08:12			14:12			18:12	
Cochem (Mosel)	an		08:19			14:19			18:19	
	ab		08:21			14:21			18:21	
Bullay DB	an		08:29			14:29			18:29	
	ab		08:33		12:41	14:33			18:33	
Wittlich Hbf	an		08:45		13:00	14:45			18:45	
	ab		08:50	09:07	13:07	14:49	15:32	17:20		19:20
Hetzerath	an		08:59		13:24	14:58	15:49	17:37		19:37
	ab		09:02		13:26		16:15	17:39		19:39
Schweich DB	an		09:07	09:32 track 1 for water	13:34 Gtrack 1 for water		16:23 track 1 for water	17:47		19:47
	ab		09:10	09:59	14:30		16:59	17:49		19:49
Trier West	durch		09:25							
Trier Hbf	an		09:41	10:14	14:43		17:12	18:03		20:03
	ab	07:59 (*)	09:55 nach Koblenz	10:25	14:54		17:23			
Karthaus	an			10:33	15:02 passengers cannot alight or board					
	ab			11:07	15:06					
Konz-Mitte	an	08:09			15:09		17:32			
	ab	08:11			15:12		17:35			
Wellen	an	08:24		11:23			17:47			
	ab	08:26		11:25						
Wincheringen	an	08:35		11:34	15:34					
	ab	08:38		11:37	15:36					
Nennig	an	08:50		11:49	15:48					

(*) trains 61951 to Saarbrücken and 61960 to Nennig run parallel from Trier Hbf. to Karthaus

Trier – Gerolstein, *Saturday, Sunday and Tuesday*

train number		DPE 61932	DPE 61934	DPE 61936	DPE 61938	61940
loco at 28.04.		01 202	78 468	52 8195	01 202	52 8195
loco at 29.04.		52 8195	78 468	01 202	52 8195	78 468
loco at 01.05.		52 8195	78 468	01 202	52 8195	78 468
coaches at 28.04.		Umbaudreihachser	Umbauvierachser	Umbaudreihachser	Umbauvierachser	Umbaudreihachser
coaches at 29.04.		Umbaudreihachser	Umbauvierachser	Umbaudreihachser	Umbauvierachser	Umbaudreihachser
coaches at 01.05.		Umbaudreihachser	Umbauvierachser	Umbaudreihachser	Umbauvierachser	Umbaudreihachser
Trier Hbf	ab	06:40	08:45	11:18	14:18	16:14
Ehrang	an	06:47 passengers cannot alight or board				
	ab	06:53 (*)				
Trier West	durch			11:36	14:36	16:34
	an			11:57	14:57	16:56
Kordel	ab			11:59	14:59	16:59
Daufenbach	an	07:04	09:03	12:05	15:05	17:05
	ab	07:08	09:10	12:10	15:10	17:10
Auw a. d. Kyll	an				15:17 passengers cannot alight or board	
	ab				15:23	
Speicher	an	07:18	09:20	12:20		
	ab	07:20	09:22	12:22		
Bitburg	an	07:31	09:32	12:33	15:37	17:29
	ab	07:33	09:43	12:35	15:42	
Kyllburg	an	07:40	09:49	12:42	15:49	
	ab	07:41	09:54	12:50	15:55	
Birresborn	an			13:06 passengers cannot alight or board		
	ab			13:08		
Gerolstein	an	08:04	10:18	13:16	16:18	

(*) simultaneous departure at 6:53 from Ehrang: 61959 to Trier and 61932 to Gerolstein

Gerolstein – Trier, *Saturday, Sunday and Tuesday*

train number		DPE 61933	DPE 61935	DPE 61937	DPE 61939	DPE 61941
loco at 28.04.		01 202 tender first	78 468	52 8195	52 8195 tender first	01 202 tender first
loco at 29.04.		52 8195	78 468	01 202 tender first	52 8195 tender first	52 8195
loco at 01.05.		52 8195	78 468	01 202 tender first	78 468 tender first	52 8195
coaches at 28.04.		Umbaudreiachser	Umbauvierachser	Umbaudreiachser	Umbauvierachser	Umbaudreiachser
coaches at 29.04.		Umbaudreiachser	Umbauvierachser	Umbaudreiachser	Umbauvierachser	Umbaudreiachser
coaches at 01.05.		Umbaudreiachser	Umbauvierachser	Umbaudreiachser	Umbauvierachser	Umbaudreiachser
Gerolstein	ab	09:25	12:25	14:25		18:25
Kyllburg	an	09:48	12:47	14:48		18:48
	ab	09:51	12:50	14:50		18:50
Bitburg	an	09:57	12:57	14:56		18:56
	ab	09:59	12:59	14:59	18:00	18:59
Philippsheim	an	10:07 passengers cannot alight or board	13:07 passengers cannot alight or board	15:07 passengers cannot alight or board	18:08 passengers cannot alight or board	19:07 passengers cannot alight or board
	ab	10:11	13:11	15:13	18:12	19:11
Speicher	an	10:15	13:15			19:15
	ab	10:17	13:17			19:17
Daufenbach	an	10:27	13:27			19:27
	ab	10:29	13:29			19:29
	an	10:35	13:34	15:31	18:29	19:35
Kordel	ab	10:37	13:37	15:33	18:31	19:37
Trier Hbf	an	10:49	13:49	15:45	18:43	19:50

Trier – Luxemburg, *Saturday, Sunday and Tuesday*

train number		13400	13402
loco at 28.04.		CFL 5519	CFL 5519
loco at 29.04.		CFL 5519	CFL 5519
loco at 01.05.		CFL 5519	CFL 5519
Wagen am 28.04.		CFL-Zug	CFL-Zug
Wagen am 29.04.		CFL-Zug	CFL-Zug
Wagen am 01.05.		CFL-Zug	CFL-Zug
Trier Hbf.	ab	10:53	18:17
Igel	an	11:05	18:29
	ab	11:08	18:32
Wasserbillig	an	11:15	18:37
	ab	11:17	18:39
Luxembourg	an	12:11	20:11

Luxembourg – Trier, *Saturday, Sunday and Tuesday*

train number		13401	13403
loco at 28.04.		CFL 5519 tender first	CFL 5519 tender first
loco at 29.04.		CFL 5519 tender first	CFL 5519 tender first
loco at 01.05.		CFL 5519 tender first	CFL 5519 tender first
Wagen am 28.04.		CFL-Zug	CFL-Zug
Wagen am 29.04.		CFL-Zug	CFL-Zug
Wagen am 01.05.		CFL-Zug	CFL-Zug
Luxembourg	ab	07:49	13:49
Wasserbillig	an	08:45	14:45
	ab	08:48	15:15
Igel	an	08:53	15:22
	ab	08:55	15:25
Trier Hbf	an	09:08	15:38

Trier – Saarbrücken, *Saturday, Sunday and Tuesday*

train number		DPE 61951	DPE 61953	DPE 61955
loco at 28.04.		03 1010	01 1075	V200 033
loco at 29.04.		03 1010	01 1075	V200 033
loco at 01.05.		03 1010	01 1075	V200 033
coaches at 28.04.		Silberlinge 2	Silberlinge 1	Silberlinge 2
coaches at 29.04.		Silberlinge 2	Silberlinge 1	Silberlinge 2
coaches at 01.05.		Silberlinge 2	Silberlinge 1	Silberlinge 2
Trier Hbf	ab	07:59 (*)	10:08	15:50
Konz	an	08:08	10:17	15:57
	ab	08:11	10:19	16:00
Saarburg	an	08:23	10:30	16:12
	ab	08:32	10:33	16:16
Merzig	an	08:54	10:54	16:35
	ab	08:56	10:56	
Dillingen	an	09:06	11:06	
	ab	09:08	11:08	
Saarlouis	an	09:12	11:12	
	ab	09:14	11:14	
Völklingen	an	09:24	11:24	
	ab	09:27	11:27	
Saarbrücken	an	09:37	11:38	

(*) trains 61951 to Saarbrücken and 61960 to Nennig run parallel from Trier Hbf. to Karthaus)

Saarbrücken – Trier, *Saturday, Sunday and Tuesday*

train number		DPE 61950	DPE 61952	DPE 61954
loco at 28.04.		03 1010	01 1075	V200 033
loco at 29.04.		03 1010	01 1075	V200 033
loco at 01.05.		03 1010	01 1075	V200 033
coaches at 28.04.		Silberlinge 2	Silberlinge 1	Silberlinge 2
coaches at 29.04.		Silberlinge 2	Silberlinge 1	Silberlinge 2
coaches at 01.05.		Silberlinge 2	Silberlinge 1	Silberlinge 2
Saarbrücken	ab	11:37	13:37	
Völklingen	an	11:57	13:46	
	ab	12:01	13:49	
Saarlouis	an	12:11	13:59	
	ab	12:14	14:02	
Dillingen	an	12:18	14:06	
	ab	12:24	14:08	
Merzig	an	12:34	14:18	
	ab	12:36	14:20	17:55
Saarburg	an	12:56	14:40	18:21
	ab	13:15	14:42	18:24
Konz	an	13:27	14:54	18:35
	ab	13:29	14:56	18:37
Trier Hbf	an	13:37	15:05	18:45
	ab		15:09 nach Wittlich	

timetables for Monday, April 30

departures and arrivals Trier Hbf.

last corrections April 02. All trains steam unless stated otherwise. Dampfspektakel tickets are not valid in the private specials.

train number	Trier Hbf. arr. (an), dep. (ab)	to (nach) / from (von)	track	remarks
Lr 5464/5465	an 7.50, ab 8.09	von Koblenz, nach Brohl	402/412	electric loco
61945	ab 8.50	nach Saarbrücken	413	
20061	ab 9.50	nach Schweich	413	diesel at rear
61947	ab 10.16	nach Saarbrücken	413	
20110	an 12.04	von Schweich	413	diesel at rear
61944	an 13.47	von Saarbrücken	403	
61949	ab 14.41	nach Saarbrücken	412	
20112	ab 14.50	nach Schweich	413	diesel, steam at rear
61946	an 16.45	von Saarbrücken	413	
20115	an 17.05	von Schweich	413	diesel, steam at rear
5468/Lr 469	an 17.48, ab 18.15	von Brohl, nach Koblenz	403	electric loco
61948	an 19.37	von Saarbrücken	413	
20117	an 15:36	von Stuttgart	404	private special, electric loco class 194
74009	ab 21:16	nach Stuttgart	403	private special, electric loco class 194. may depart 20:18 instead.

Rund um Trier, *Monday*

			train number	train engine	loco at rear		train number	train engine	loco at rear
Trier Hbf.	ab	09:50	20061	78 468	211 041-9	14:50	20112	211 041-9	78 468
Konz an	an	09:59				14:59			
	ab	10:05		211 041-9	78 468	15:05		78 468	211 041-9
Igel	an	10:13				15:13			
	ab	10:20		78 468	211 041-9	15:20		211 041-9	78 468
Trier West	durch	10:28				15:28			
Schweich	an	10:46				15:46			
	ab	10:57	20098	211 041-9	78 468	15:57	20113	78 468	211 041-9
Trier West	durch	11:12				16:12			
Wellen	an	11:31				16:34			
	ab	11:41	20110	78 468	211 041-9	16:45	20115	211 041-9	78 468
Trier Hbf.	an	12:04				17:15			

coaches: Umbaudreischser

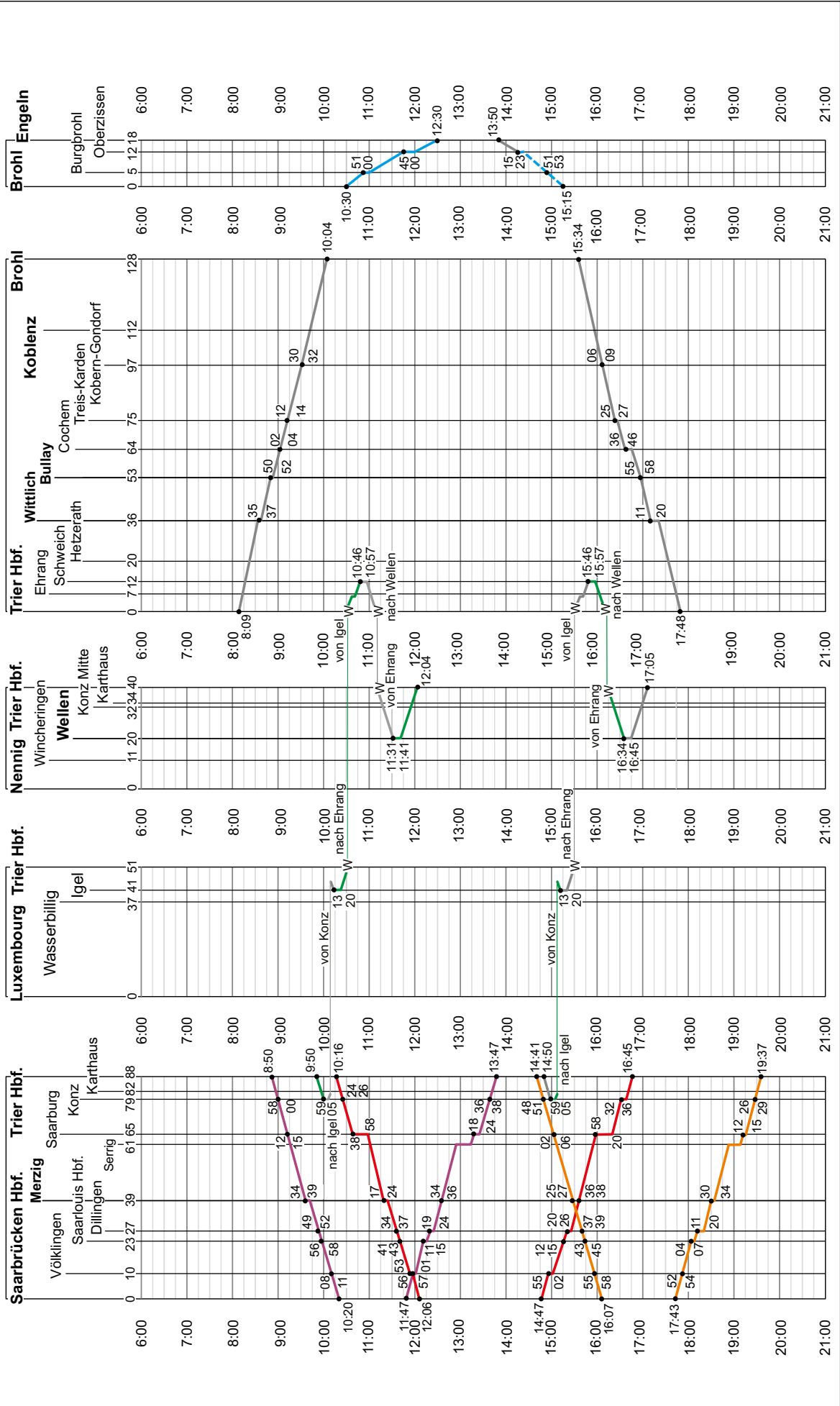
Dampfspektakel Montag 30.04.2018

Halt zum Ein- und Aussteigen,
Ankunfts- und Abfahrtszeit/
train stops for passengers,
times of arrival and departure
Zug verkehrt über Trier West /
train runs via Trier West

Zuglok / train engine
01 202 Diesellok / Elok
01 1075 Diesellok / Elok
03 1010 Diesellok / Elok
78 468 Tender first

Rauchkammer voraus
chimney first
Tender voraus
tender first

Stand: 30. 03. 2018
Graphik: Illert / Revierdampf-Team
alle Angaben ohne Gewähr



Trier – Brohltal – Trier, *Monday*

train number	DPE 5465	DPE 5468
loco at 30.04.	103 113	103 113
coaches at 30.04.	5 coaches of DB-museum creme-red and 1 coach creme-blue	5 coaches of DB-museum creme-red and 1 coach creme-blue
Trier Hbf	08:09	17:48
Wittlich Hbf	08:35	17:20
	08:37	17:11
Bullay DB	08:50	16:58
	08:52	16:55
Cochem (Mosel)	09:02	16:46
	09:04	16:36
Treis-Karden	09:12	16:27
	09:14	16:25
Koborn-Gondorf	09:30	16:09
	09:32	16:06
Brohl	10:04	15:34
Sonderzug der Brohltalbahn		
loco at 30.04	train engine 11sm, diesel at rear	train engine 11sm tender first. Diesel pilot from Engeln to Oberzissen and at rear from Oberzissen to Brohl.
Brohl (Brohltalbahn)	10:30	15:15
Burgbrohl	10:51	14:53
	11:00	14:51
Oberzissen	11:45	14:23
	12:00	14:15
Engeln	12:30	13:50

Trier – Saarbrücken, *Monday*

train number		DPE 61945	DPE 61947	DPE 61949
loco at 30.04.		03 1010	01 202	01 1075
coaches at 30.04.		Silberlinge 2	Silberlinge 1	Silberlinge 2
Trier Hbf	ab	08:50	10:16	14:41
Konz	an	08:58	10:24	14:48
	ab	09:00	10:26	14:51
Saarburg	an	09:12	10:38	15:02
	ab	09:15	10:58	15:06
Merzig	an	09:34	11:17	15:25
	ab	09:39	11:24	15:27
Dillingen	an	09:49	11:34	15:37
	ab	09:52	11:37	15:39
Saarlouis	an	09:56	11:41	15:43
	ab	09:58	11:43	15:45
Völklingen	an	10:08	11:53	15:55
	ab	10:11	11:57	15:58
Saarbrücken	an	10:20	12:06	16:07

Saarbrücken – Trier, *Monday*

train number		DPE 61944	DPE 61946	DPE 61948
loco at 30.04.		03 1010	01 202	01 1075
coaches at 30.04.		Silberlinge 2	Silberlinge 1	Silberlinge 2
Saarbrücken	ab	11:47	14:47	17:43
Völklingen	an	11:56	14:56	17:52
	ab	12:01	15:02	17:54
Saarlouis	an	12:11	15:12	18:04
	ab	12:15	15:15	18:07
Dillingen	an	12:19	15:20	18:11
	ab	12:24	15:26	18:20
Merzig	an	12:34	15:36	18:30
	ab	12:36	15:38	18:34
Saarburg	an	13:18	15:58	19:12
	ab	13:24	16:20	19:15
Konz	an	13:36	16:32	19:26
	ab	13:38	16:36	19:29
Trier Hbf	an	13:47	16:45	19:37

one coach added to each stock Silberlinge 1 and Silberlinge 2

The Dampfspektakel 2018 event takes place in a region that is famous for its wine. Therefore, you might combine your railway activities with a visit to a good restaurant and/or winemaker. In the following you will find a selection of good restaurants and wine-growing estates along the steam lines of the Dampfspektakel. The entries have been extracted from relevant guide books (Gault-Millau, Michelin, Eichemann and the „Feinschmecker“ magazine). If you intend a visit we recommend you arrange a date or reserve a table by phone call.

Restaurants

Ayl

Restaurant Ayler Kupp
www.saarwein-hotel.de

Nittel

Restaurant Culinarium
www.culinarium-nittel.de

Perl

Victor's Fine Dining
www.victors-fine-dining.de

Reil

Heim's Restaurant
www.reiler-hof.de

Saarbrücken

Brasserie Schlachthof
www.schlachthof-brasserie.de

Gästehaus Klaus Erfort

www.gaestehaus-erfort.de

Restaurant L'Argonier

www.largonier.de

Saarburg

Restaurant Villa Keller
www.villa-keller.de

Saarlouis

Bistro Pastis
www.lamaison-hotel.de

Serrig

Restaurant Wagner
www.gasthaus-wagner-serrig.de

Trier

Restaurant Bagatelle
www.bagatelle-trier.de

Restaurant Brasserie
www.brasserie-trier.de

Restaurant Schlemmereule

www.schlemmereule.de

Wasserliesch

Restaurant Scheid's
www.scheids-wasserliesch.de

Wittlich

Waldhotel Sonnora
www.hotel-sonnora.de

Vine estates

Ayl

Weingut Peter Lauer
www.lauer-ayl.de

Kanzem

Weingut von Orthegraven
www.von-orthegraven.de

Konz

Weingut Stefan Müller
www.weingutmueller-saar.de

Weingut Hofgut Falkenstein
www.hofgutfalkenstein.com

Weingut von Hövel
www.weingut-vonhoevel.de

Ockfen

Weingut Dr. Fischer
www.doktor-fischer-bockseinhof.de

Pünderich

Weingut Clemens Busch
www.clemens-busch.de

Reil

Weingut Melsheimer
www.melsheimer-riesling.de

Saarburg

Weingut Forstmeister Geltz-Zilliken
www.zilliken-vdp.de

Weingut Dr. Wagner
www.weingutwagner.de

Serrig

Weingut Schloss Saarstein
www.saarstein.de

Schoden

Weingut Herrenberg
www.lochriesling.de

Trier

Bischöfliche Weingüter
www.bischoeflicheweingueter.de

Ürzig

Weingut Jos. Christoffel Jr.
Tel.: 0 65 32 – 21 13

Wiltigen

Weingut Egon Müller
www.scharzhof.de

Weingut van Volxem
www.vanvolxem.com

Wormeldang (Luxembourg)

Domaine Alice Hartmann
www.alice-hartmann.lu